

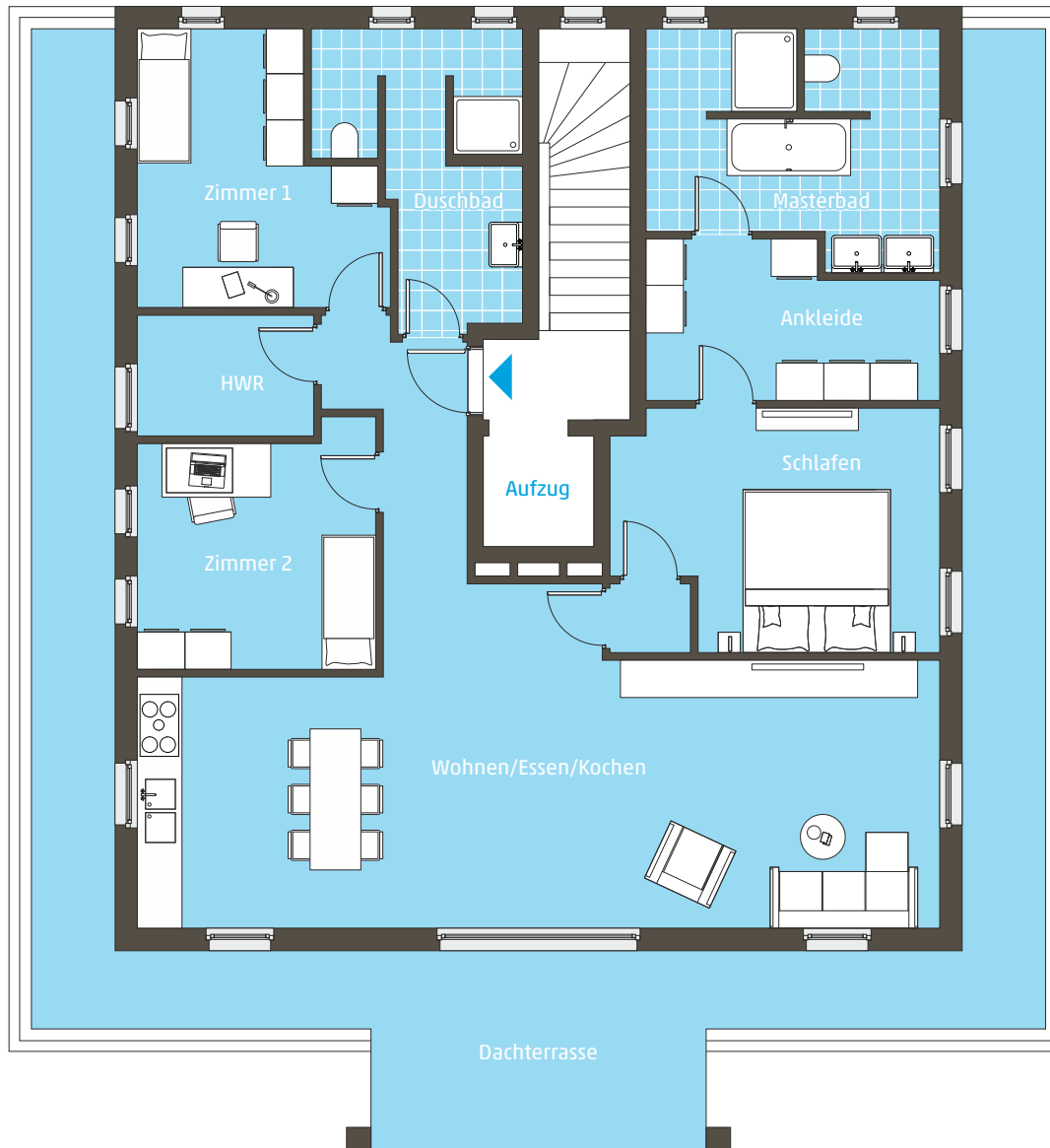
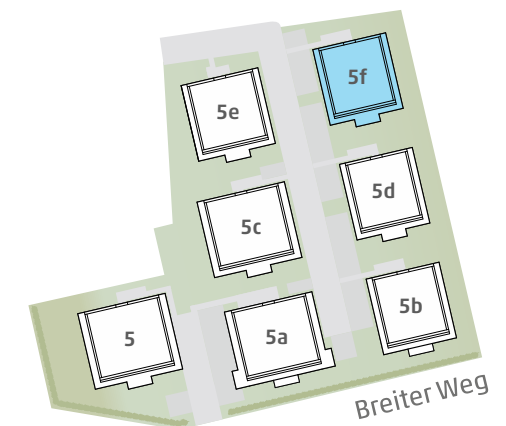
HAUS 5f

Penthaus
4-Zimmer

Adresse:
Breiter Weg 5f, 22880 Wedel

Wohnfläche:
154,68m²

LAGE



Erdmann & Haas Projektgesellschaft mbH
Telefon: 0 41 03 / 1 88 15 94
Email: verkauf@autal-villen.de